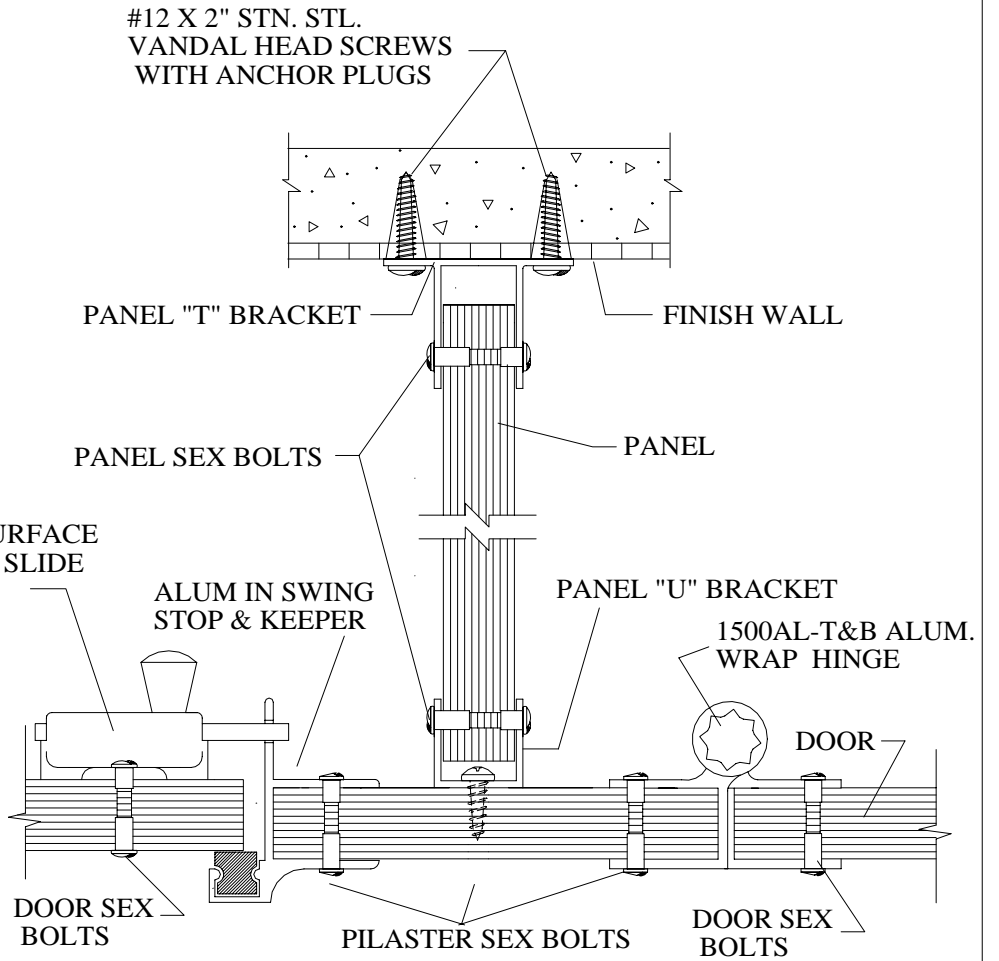


CH-6 CEILING CONNECTION

NOTE: MINIMUM SIZE PILASTER IS 8" EXCEPT AT WALL WHERE ANY STANDARD SIZE MAY BE USED.



SERIES CH-6 CONSTRUCTION DETAILS

**ROCKVILLE
PARTITIONS
INCORPORATED**